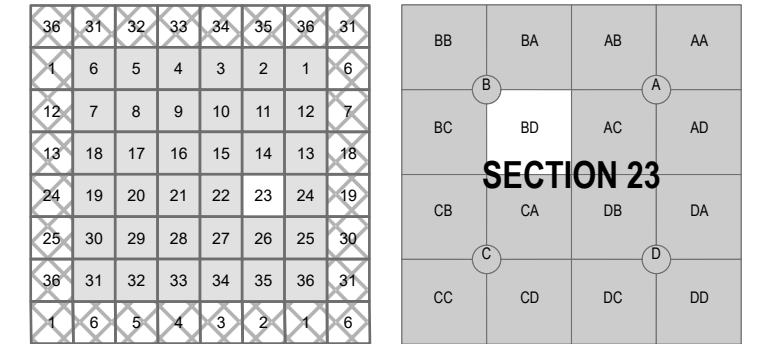
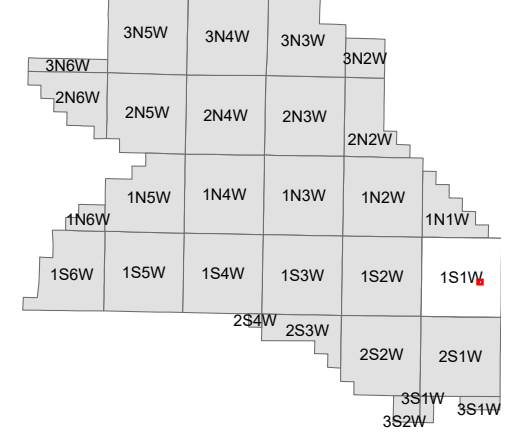
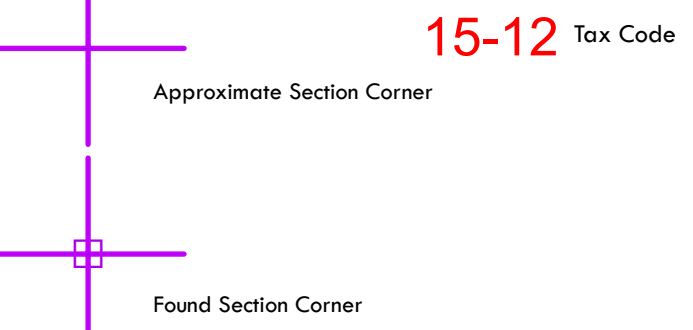


WASHINGTON COUNTY OREGON
SE 1/4 NW 1/4 SECTION 23 T1S R1W
SCALE 1"= 100'

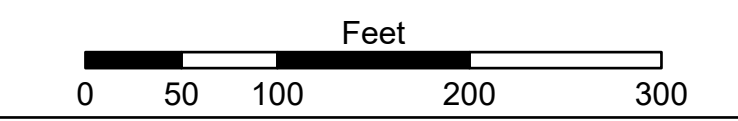


FOR ADDITIONAL MAPS VISIT OUR WEBSITE AT
www.washingtoncountyor.gov/gis

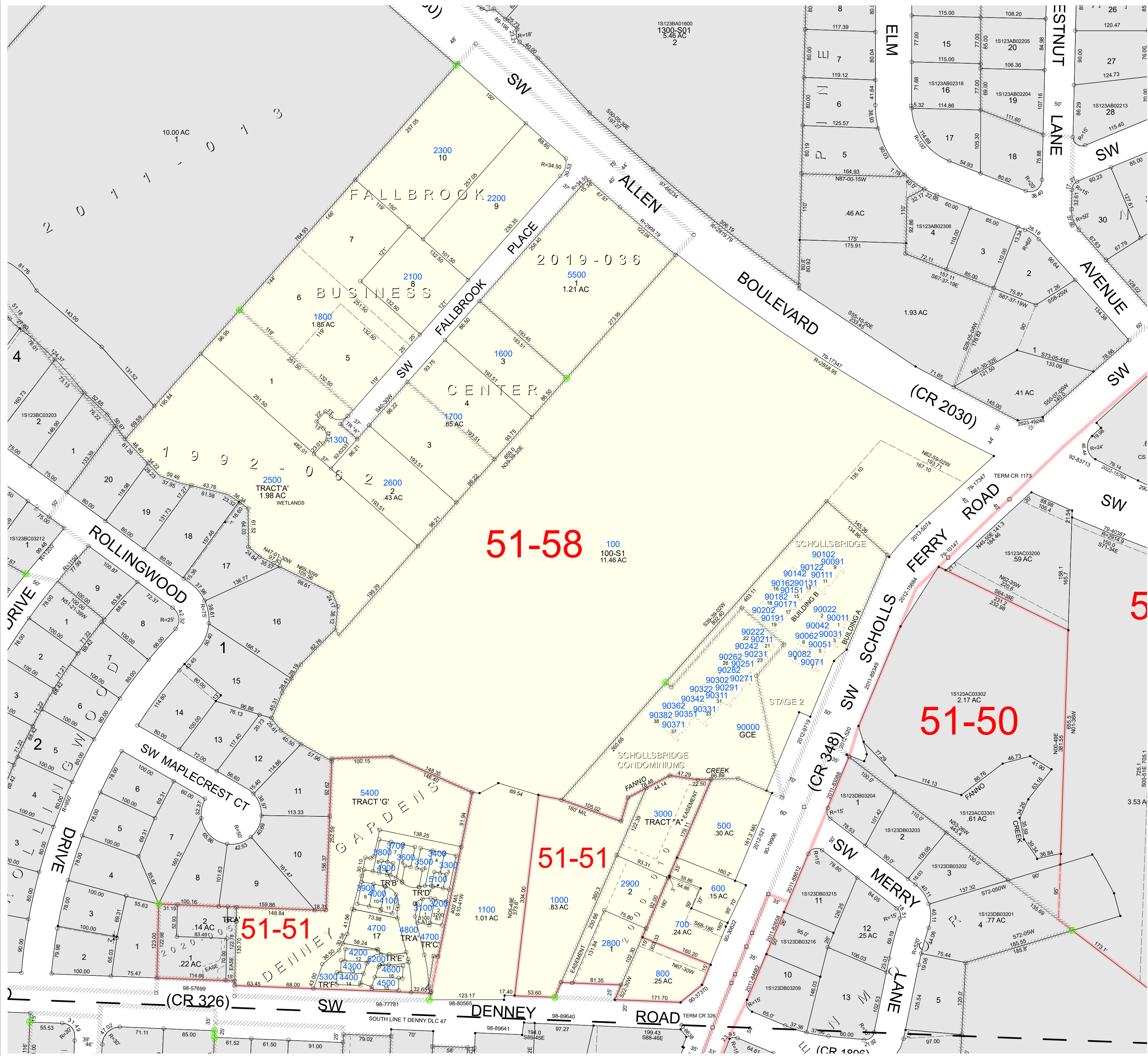
- Plat Lot Corner
- Adjusted Lot Corner
- Lot Corner in Road
- * Urban Land Hook
- ⊙ Initial Point of Plat
- ⊙ Approximate DLC Corner
- Found DLC Corner
- + Stationing
- Taxlot Line
- - - Old Lot Line
- - - Plat Boundary
- - - Easement ROW
- - - Easement Centerline
- - - Condo Unit Boundary
- - - Public Road Centerline
- - - Railroad Centerline
- - - Stream
- - - Donation Land Claim
- - - Tax Code Line



Cancelled Taxlots For: 1S123BD
2400, 1900, 2000, 2700, 400, 300, 900, 200, 1200, 1400, 1500



PLOT DATE: 12/13/2024
FOR ASSESSMENT PURPOSES ONLY - DO NOT RELY ON FOR OTHER USE
Map areas delineated by either gray shading or a cross-hatched pattern are for reference only and may not indicate the most current property boundaries. Please consult the appropriate map for the most current information.



51-58
100
100-S1
11.46 AC

51-50

51-51
1000
83 AC

51-51
4700
17

5

15-12 Tax Code