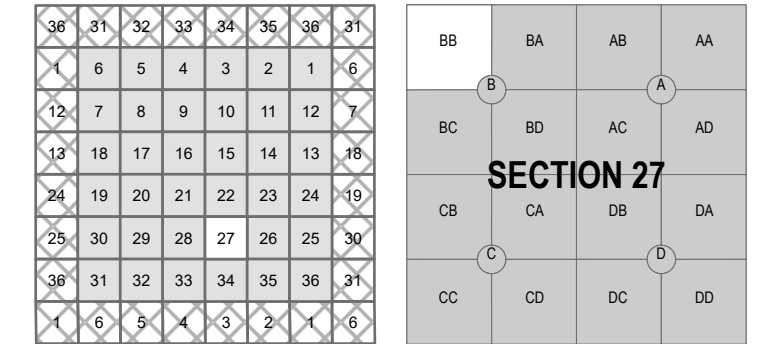
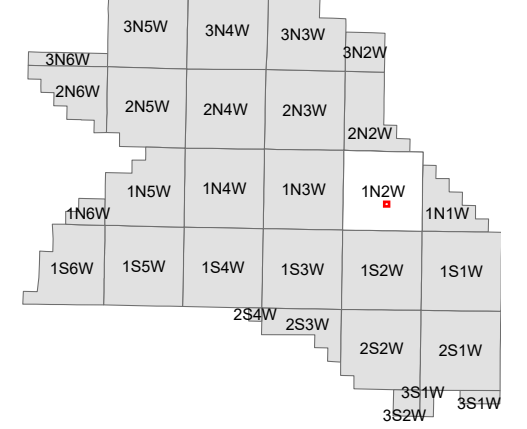
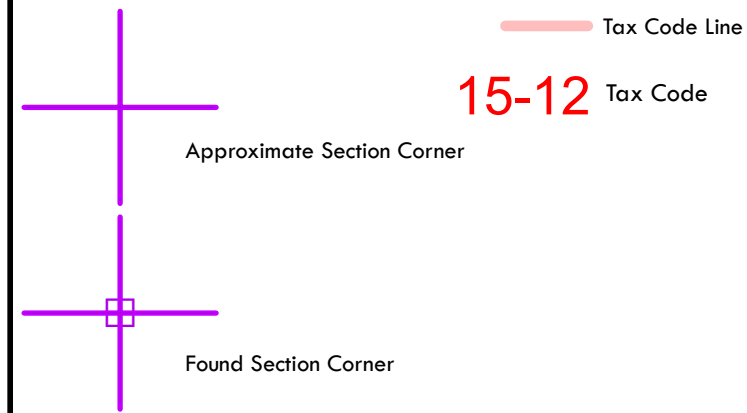


WASHINGTON COUNTY OREGON
NW 1/4 NW 1/4 SECTION 27 T1N R2W
SCALE 1"= 100'

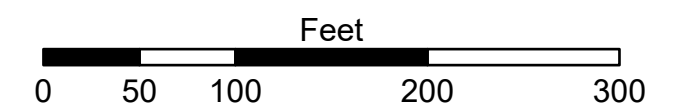


FOR ADDITIONAL MAPS VISIT OUR WEBSITE AT
www.washingtoncountyor.gov/gis

- Plat Lot Corner
- Adjusted Lot Corner
- Lot Corner in Road
- * Urban Land Hook
- ⊙ Initial Point of Plat
- ⊙ Approximate DLC Corner
- Found DLC Corner
- + Stationing
- Taxlot Line
- - - Old Lot Line
- /// Plat Boundary
- - - Easement ROW
- - - Easement Centerline
- - - Condo Unit Boundary
- - - Public Road Centerline
- - - Railroad Centerline
- Stream
- Donation Land Claim
- Tax Code Line



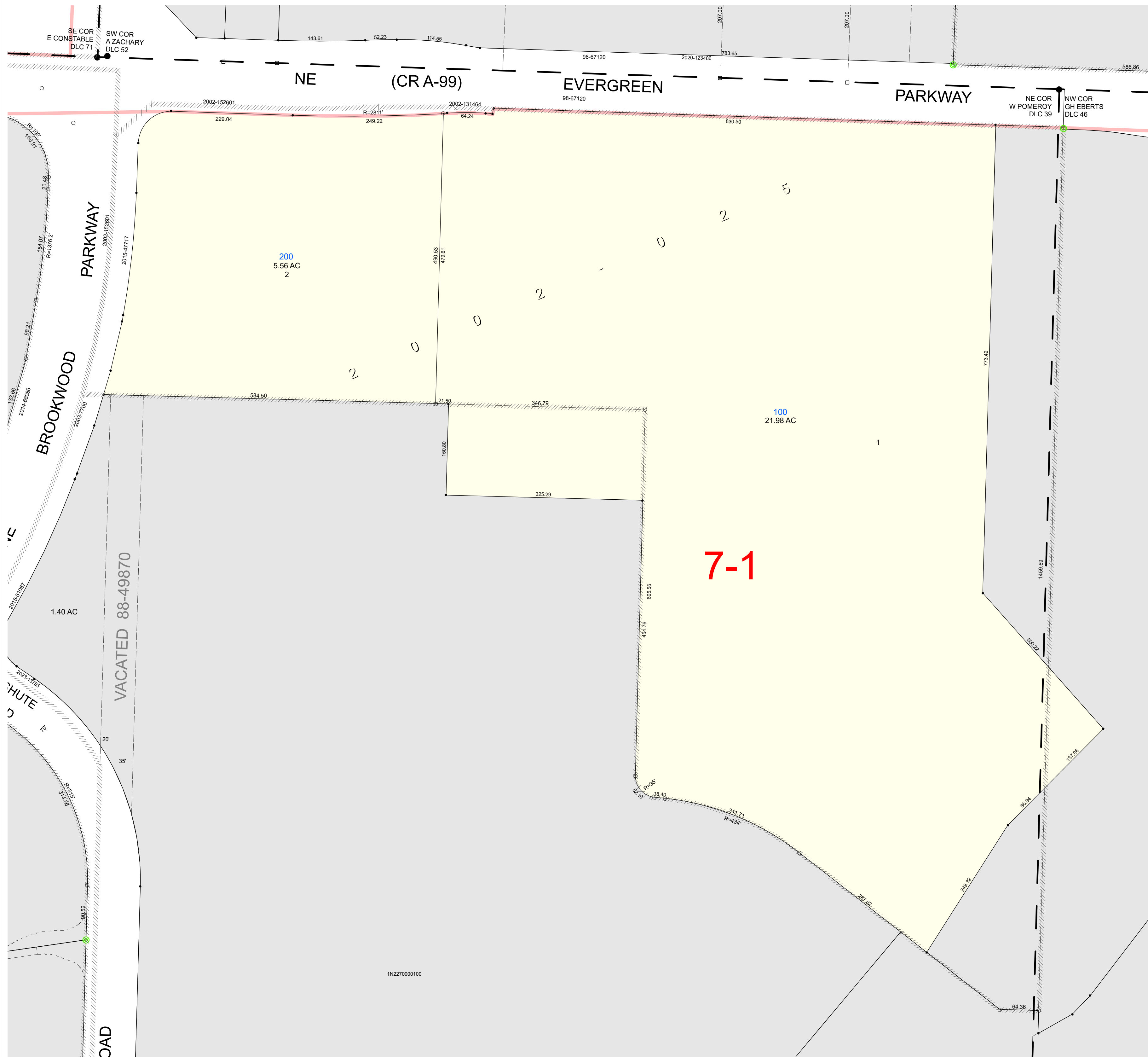
Cancelled Taxlots For: 1N227BB
300, 400



PLOT DATE: 5/30/2024

**FOR ASSESSMENT PURPOSES
ONLY - DO NOT RELY ON
FOR OTHER USE**

Map areas delineated by either gray shading or a cross-hatched pattern are for reference only and may not indicate the most current property boundaries. Please consult the appropriate map for the most current information.



1N2270000100