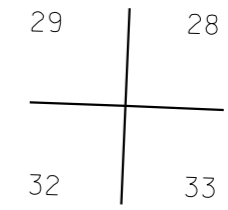


THIS MAP WAS PREPARED FOR
ASSESSMENT PURPOSE ONLY

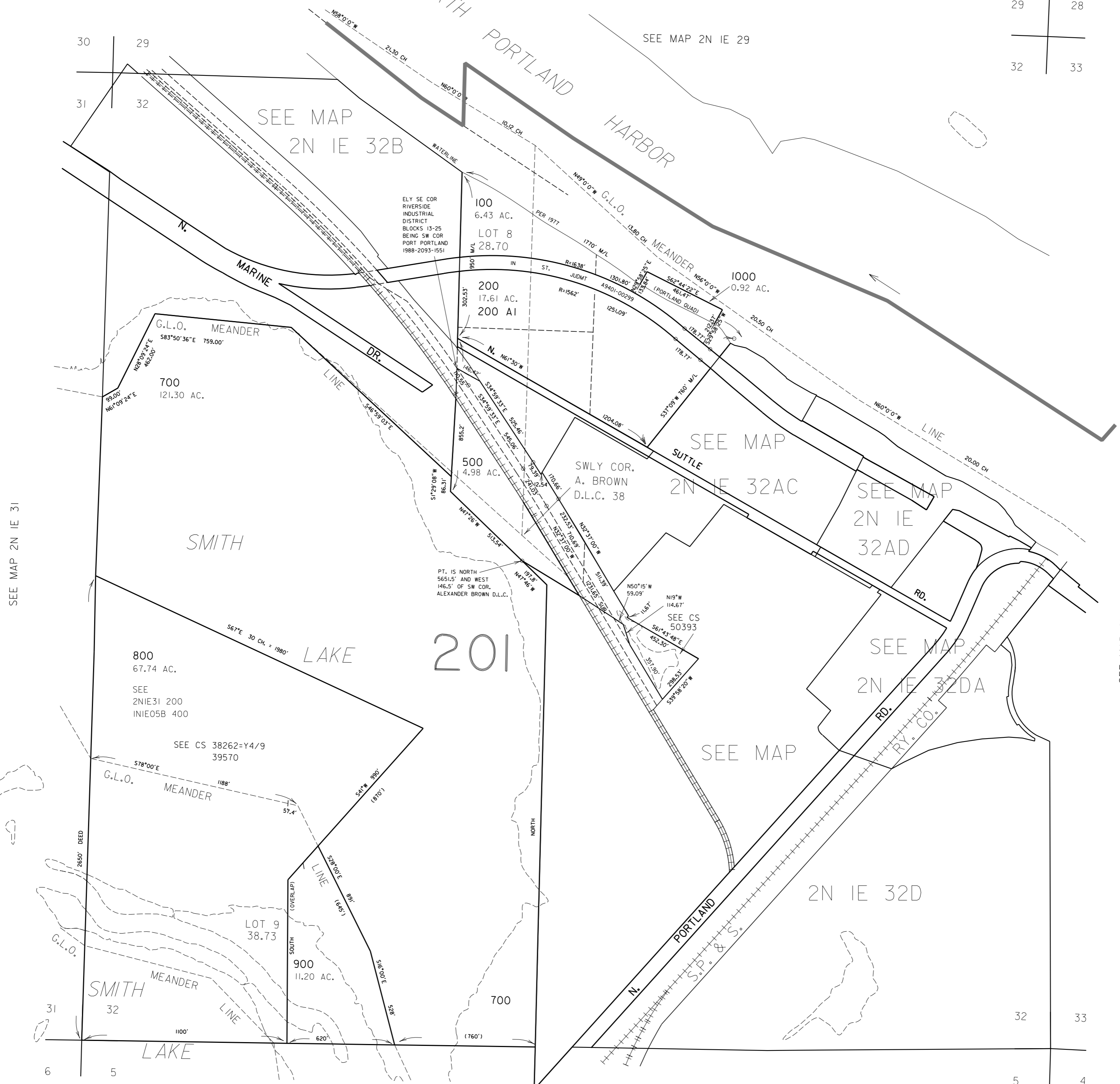
SECTION 32 T.2N. R.1E. W.M.
MULTNOMAH COUNTY

1" = 400'

2N 1E 32
& INDEX
PORTLAND



CANCELLED NO.
300
400
600



SEE MAP 2N 1E 31

SEE MAP 2N 1E 33

SEE MAP IN 1E 5B

SEE MAP IN 1E 5

2N 1E 32
& INDEX
PORTLAND