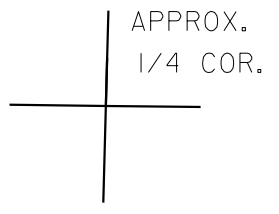
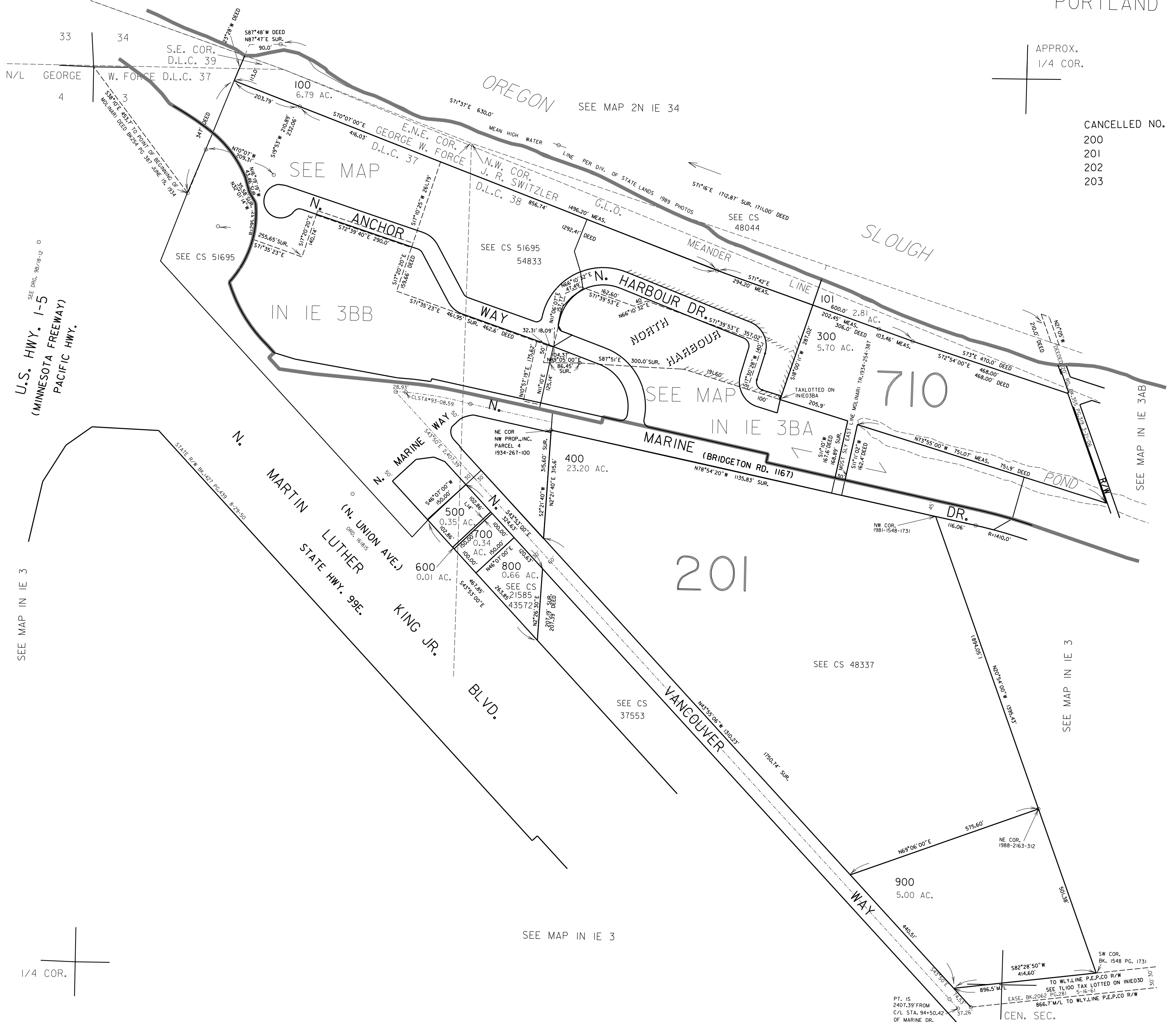


THIS MAP WAS PREPARED FOR  
ASSESSMENT PURPOSE ONLY

NW1/4 SEC. 3 T.1N. R.1E. W.M.  
MULTNOMAH COUNTY  
1" = 200'

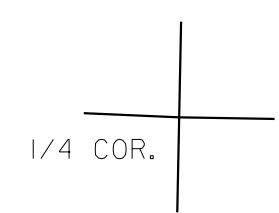
IN IE 3B  
& INDEX  
PORTLAND



CANCELLED NO.  
200  
201  
202  
203

U.S. HWY. 1-5  
(MINNESOTA FREEWAY)  
PACIFIC HWY.

SEE MAP IN IE 3



SEE MAP IN IE 3AB

SEE MAP IN IE 3

SEE MAP IN IE 3

CEN. SEC.  
IN IE 3B  
& INDEX  
PORTLAND