

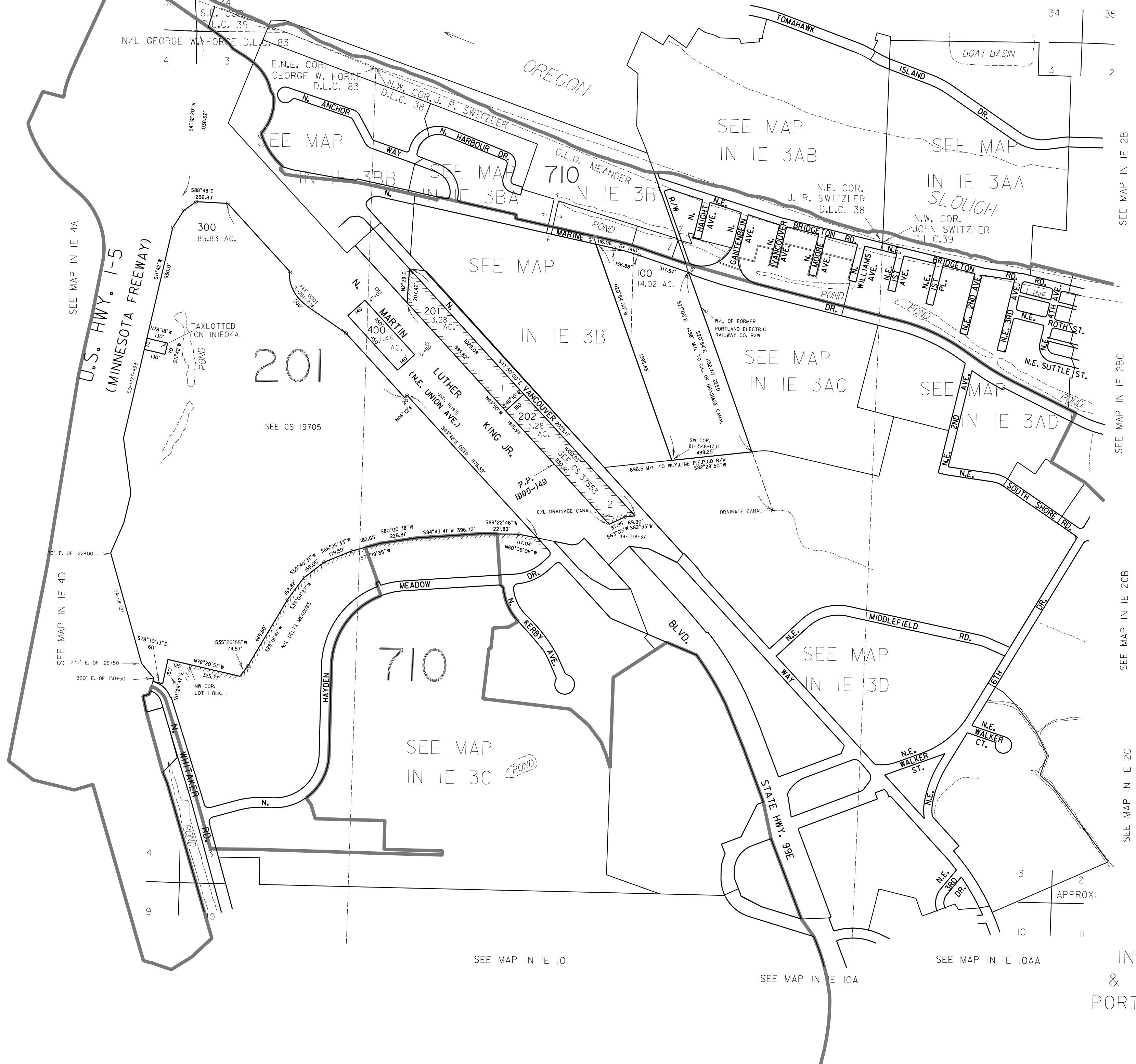
THIS MAP WAS PREPARED FOR
ASSESSMENT PURPOSE ONLY

SECTION 3 T.1N. R.1E. W.M.
MULTNOMAH COUNTY

1" = 400'
SEE MAP 2N 1E 34

IN 1E 3
& INDEX
PORTLAND

CANCELLED NO.
200



IN 1E 3
& INDEX
PORTLAND