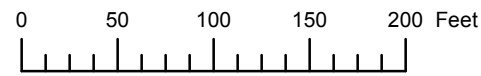


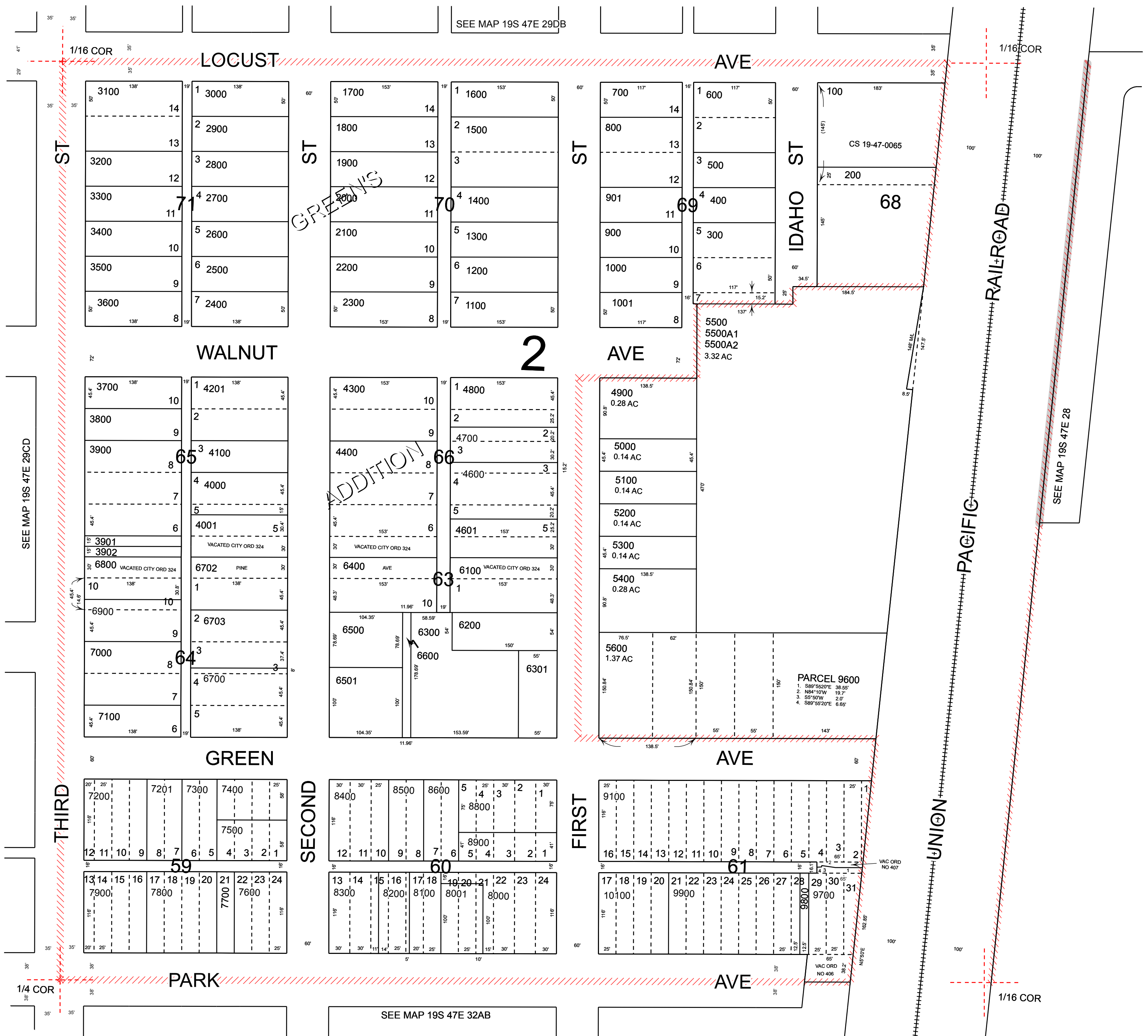
THIS MAP WAS PREPARED FOR ASSESSMENT PURPOSE ONLY



S.W.1/4 S.E.1/4 SEC.29 T.19S. R.47E. W.M. MALHEUR COUNTY 1" = 100'

19S47E29DC NYSSA

Cancelled 4200 4301 4500 5700 THRU 6000 6701 8700 9000 9200 THRU 9600 10000



SEE MAP 19S 47E 29DB

SEE MAP 19S 47E 29CD

SEE MAP 19S 47E 28

SEE MAP 19S 47E 32AB

Revised: MA 05/20/2015

NYSSA 19S47E29DC