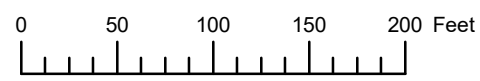


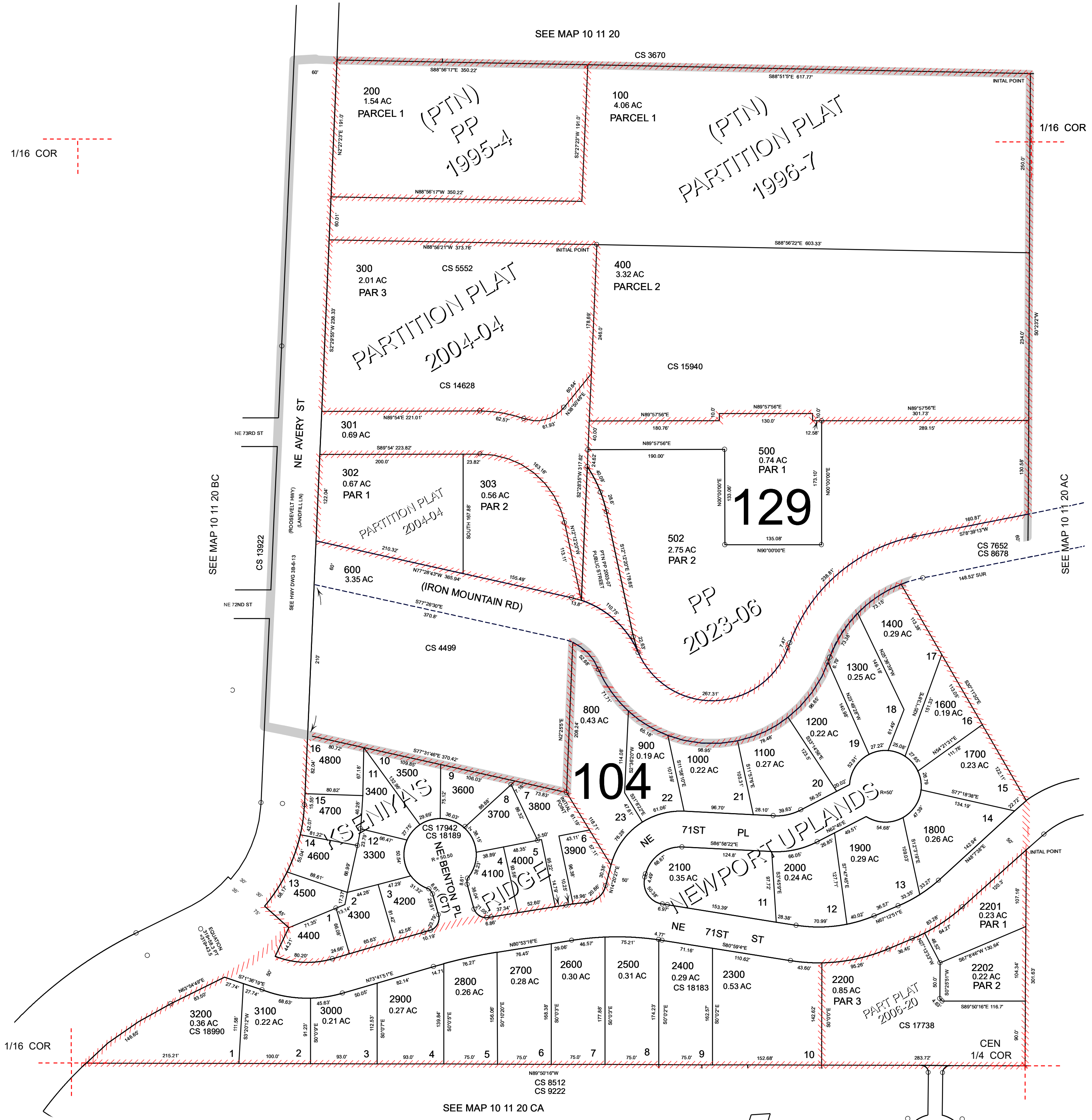
THIS MAP WAS PREPARED FOR ASSESSMENT PURPOSE ONLY



S.E. 1/4 N.W. 1/4 SEC. 20 T. 10S. R. 11W. W.M.
LINCOLN COUNTY
1" = 100'

10 11 20 BD
NEWPORT

Cancelled
501
503
504
505
700
1500



Revised: SAO
05/18/2023

NEWPORT
10 11 20 BD