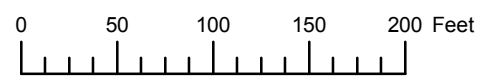


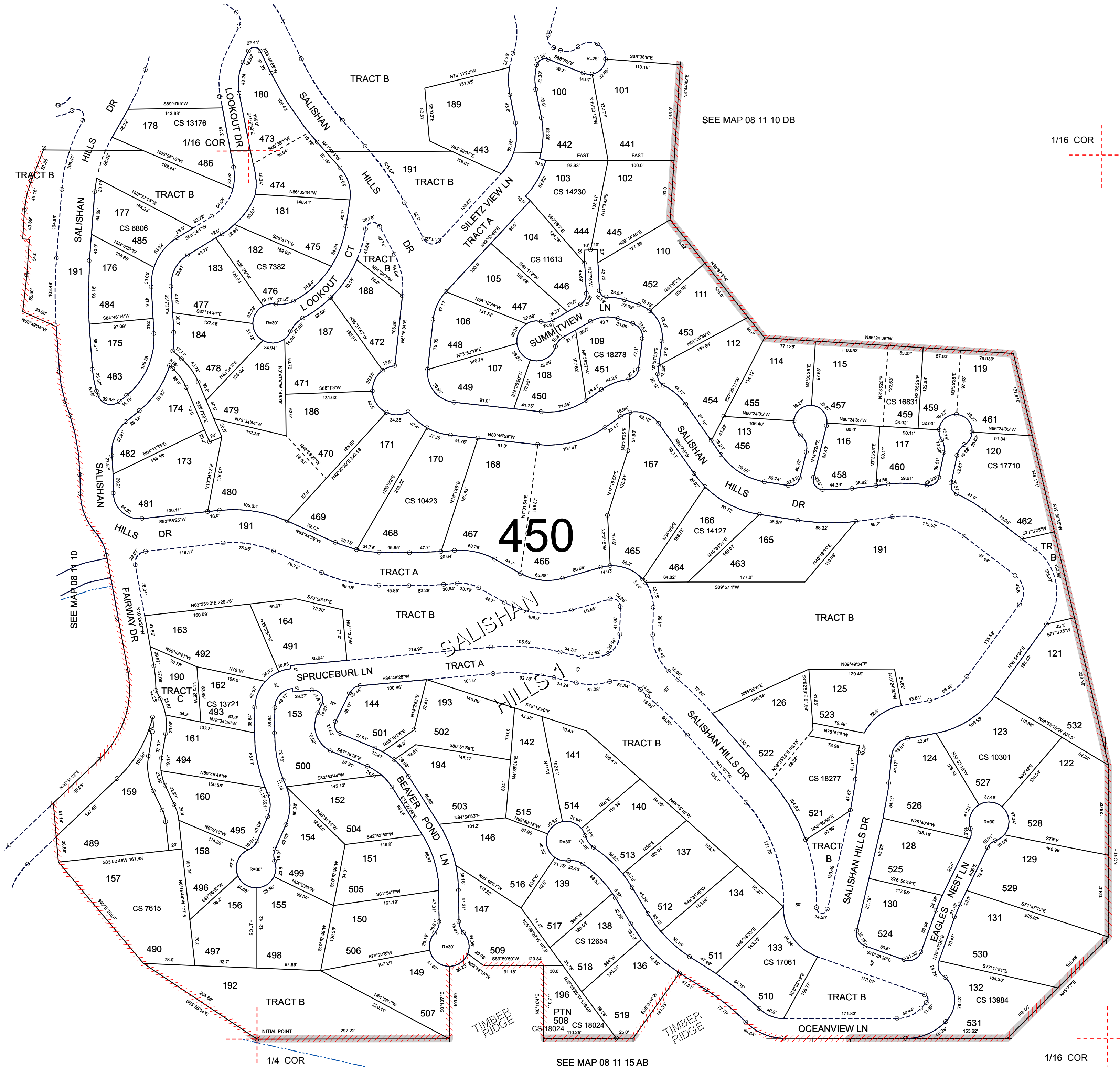
THIS MAP WAS PREPARED FOR ASSESSMENT PURPOSE ONLY



S.W.1/4 S.E.1/4 SEC.10 T.8S. R.11W. W.M.
LINCOLN COUNTY
1" = 100'

08 11 10 DC

- Cancelled
- 118
- 127
- 135
- 143
- 145
- 148
- 169
- 172
- 179
- 195



SEE MAP 08 11 10

Revised: SAO
11/18/2019

08 11 10 DC